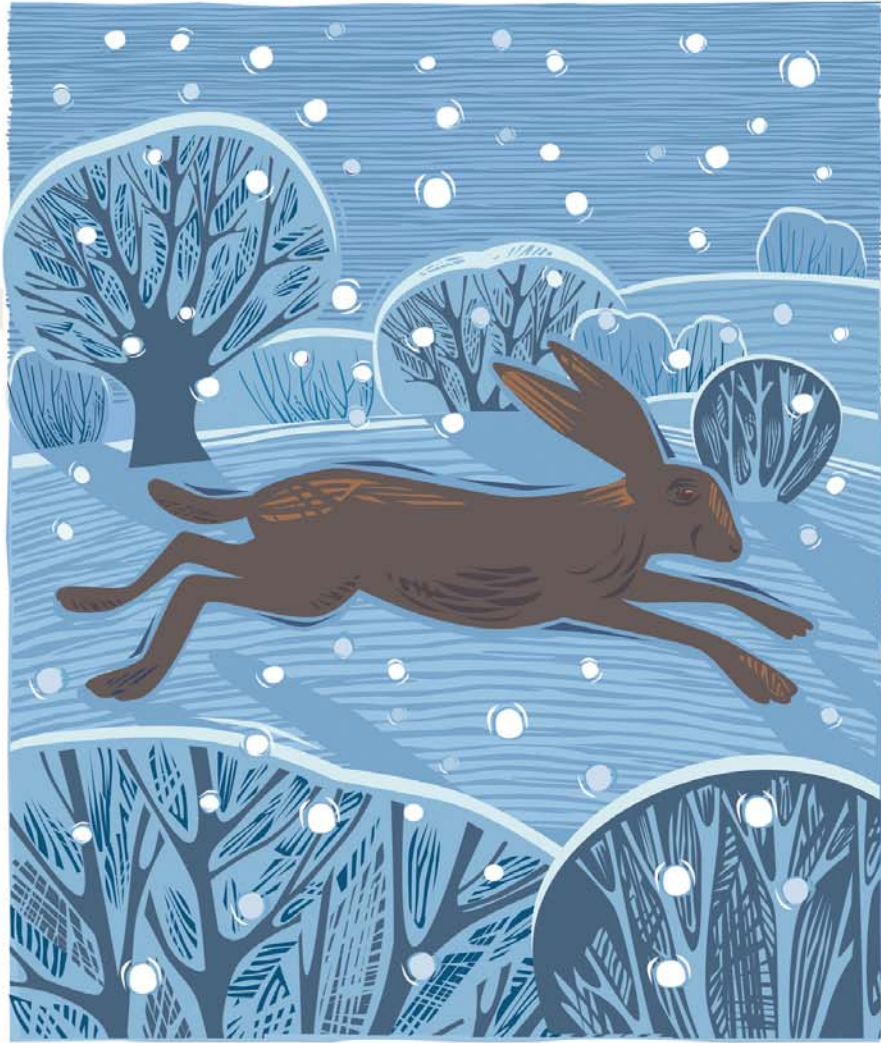


two thousand eighteen

JANUARY / FEBRUARY

MINISTRY CATALOG



GREENFORD CHRISTIAN CHURCH

WEEKLY AVERAGES

	<u>OCTOBER</u>	<u>NOVEMBER</u>	<u>FISCAL YTD</u>
Sunday Attendance	1,503	1,532	1,516
General Fund Offerings	\$32,230.11	\$31,759.29	\$32,020.86
Mission Fund Offerings	\$10,743.37	\$10,586.44	\$10,673.62
Building Fund Offerings	\$1,336.60	\$1,126.25	\$1,243.11
Weekly Budget for General Fund	\$33,375.00		
Weekly Budget for Mission Fund	\$11,125.00		

Baptisms
(10/1/17 - 9/30/18): 29

***For online giving visit:
www.greenfordchristian.org***

contents

TAKE NOTE

page 3

GENERAL INFORMATION

page 4

ON A SUNDAY

page 5

Sunday Mornings

Prayer

Library

Online Giving

Social Media

YOUTH & FAMILY MINISTRY

pages 6 - 8

First Years (Infant - K)

Kid City (1st - 4th Grade)

Crash (5th - 8th Grade)

HSM (9th - 12th Grade)

MAKING DISCIPLES

pages 9 - 11

Support Groups

Community Groups

Study Groups

Other Opportunities

RESOURCES

page 11

SERVE ON CAMPUS

page 12 - 14

SERVE IN THE COMMUNITY

page 15

SERVE IN THE WORLD

page 16

CALENDAR

inside back cover)

take note

DISCOVER GREENFORD Sunday, January 7 12p -1:30p Bldg D lobby

If you're new to Greenford, or have been here for a very long time, this 90-minute luncheon is for you! Join us as we discover the purpose, mission, and strategies of our church, and as we find out what your next steps are in continuing on your faith journey and getting involved here. *Childcare is available for kids through 6th grade, and they will be fed too!* **Sign up online at: www.greenfordchristian.org.**

For more information, email Jim at jcouchenour@greenfordchristian.org.

SUPER SERVE SATURDAYS at The Big Reach Center of Hope Saturday, January 6 / February 3 9a - 12p Bldg E

Come out for an hour or the entire morning...it's up to you! An easy way to take a tour, get involved, make new friends, and enjoy fellowship with others. We will be cleaning, scrubbing, sorting, stocking, and more! Come alone or bring your family and friends.

For more information, contact Val at vwaselich@greenfordchristian.org.



FINDING YOUR WAY AROUND

Review the campus map on the back cover of this catalog. Once you arrive on campus you'll find assistance at the entrance of each building to point you in the right direction.

BLDG. D WORSHIP CENTER	We gather for worship here each Sunday morning.
BLDG. D FIRST STEP ROOM	This room has many purposes. If you are a first-time guest, we would love to meet you! If you are a regular attender and want to take the next step in your discipleship journey, or want to get involved or connected, please visit us. Also, this is a place to have conversations about making a first-time decision for Christ or becoming a member.
BLDG. D INFORMATION COUNTER	Ask any question and our volunteers will assist you.
BLDG. B (5th - 12th Grade)	This building is our student center, designed with junior high and high school students in mind. Students 5th - 12th grade meet here on Sunday mornings. Students 5th - 12th grade meet here Wednesday evenings (September - May).
BLDG. C (Infant - 4th Grade)	Infants - 4th grade gather here weekly to learn about and worship God on Sunday mornings. Children 1st - 4th grade also meet here on Wednesday evenings (September - May).
BLDG. C	Our church offices are located in Bldg. C and are open Monday through Friday, 8am - 4pm.
BLDG. E	Our benevolence ministry (The Big Reach Center of Hope) is located in Bldg. E. For more details about this ministry, see page 15.

CONNECT WITH OUR STAFF

Eric Bodine, *Building Maintenance*

John Bush, *Pastoral Care*

Diana Coleman, *Early Childhood & Children's Ministry Assistant*

Jim Couchenour, *Discipleship/Community Minister*

Shelley DeAmicis, *Middle & High School Ministry Assistant*

Ron Dicken, *Counselor*

Robin Dustman, *Front Office*

Beth Felger, *Elementary Director/Family Min. Team Leader*

Dana Gough, *Development Coordinator—Big Reach Center of Hope*

Doug Gough, *Director—Big Reach Center of Hope*

Billy Hartwig, *Middle School Minister*

Marilyn Hatch, *Funeral Meal Coordinator*

Lynne Kappler, *Finance*

Corey Kelly, *First Impressions*

Sean Kelly, *Lead Minister*

Jason McGuire, *Warehouse Manager—Big Reach Center of Hope*

Jessica Mudger, *Family Ministry Volunteer Coordinator*

Jill Parker, *Custodial*

Keith Parker, *High School Minister*

Mark Pemberton, *Austintown Campus Minister*

Bruce Rhodes, Jr., *Executive Minister*

Alma Sanor, *Custodial*

Eric Shelhart, *Media Director*

Rachelle Shelhart, *Family Ministry Curriculum Coordinator*

Jennifer Trump, *Custodial*

Valerie Waselich, *Volunteer Coordinator—Big Reach Center of Hope*

Dawn Yauger, *Lead Minister Asst./Web Content Manager*

on a sunday



To download our church app, search Greenford Christian Church in the app store, or scan the QR code to the left.

WORSHIP 7:30am (traditional), 9:00am & 10:30am (contemporary) Bldg. D

At GCC we gather weekly as a church family to worship God for who He is and what He has done. When you worship with us expect uplifting music and relevant teaching, along with a celebration of the Lord's supper (communion).

COMMUNION

Communion is open to all believers. Please take the bread and cup when you are prepared to do so. GLUTEN-FREE communion is available at the Information counter. Please pick up a wafer before service.

DECISION TIME

A decision time will be extended during the service for those who wish to make a first-time commitment to Christ or place membership with us. Please visit the First Step room to speak with one of our volunteers.

FIRST STEP ROOM

This room has many purposes. If you are a first-time guest, we would love to meet you! If you are a regular attender and want to take the next step in your discipleship journey, or want to get involved or connected, please visit us. Also, this is a place to have conversations about making a first-time decision for Christ or becoming a member.

LIBRARY

The Library is located in the northeast corner of the worship center. It is open before and after worship services every Sunday morning. You are free to check out books, music, sermons, and DVDs. For a list of items available, visit www.librarything.com/catalog/gcclibrary. *Library hours: Sunday mornings at 8:30am - 9am; 10am - 10:30am; 11:30am - 12pm.*

HEARING IMPAIRED

An interpreter for the hearing impaired is available during the 7:30am worship service. Seating is located in the southwest corner of the worship center. Visit the Information counter for further assistance.

ONLINE GIVING

We offer the opportunity to give your offering electronically. For more details, visit our website.

HOME COMMUNION

If you have a family member or friend who is unable to attend worship for an extended period of time, we have pre-packaged communion available for you to pick up and take on a weekly basis.

Ask at the Information counter in the lobby of Bldg. D, or contact John: jbush@greenfordchristian.org

PRAVER

Prayer List: A current prayer list is available at the Information counter. Please take one home.

Hospital Visitation/Prayer: If you would like someone to pray with you prior to surgery or visit you in the hospital, email *John* at jbush@greenfordchristian.org or notify the church office at 330-533-3278.

SERMON VIDEO/AUDIO

You can view or listen to weekly sermons on our website at: www.greenfordchristian.org.

youth & family ministry

OUR FAMILY MINISTRY

Our Family Ministry at Greenford Christian Church includes children from infancy through high school. As in all the ministries of GCC, it is our mission to make disciples of Jesus who make disciples of Jesus. Because we believe that Scripture is clear in that parents are the primary disciple-makers in the lives of their children, our hope is to partner with parents in their pursuit of this mission, coming alongside them in the discipleship process. We want to help build a strong, gospel-centered foundation for our kids that would lead to a life devoted to Christ and the expansion of His kingdom. With this in mind, we are intentional about helping children understand, on their level, what it means to put Jesus first, to love others, to share their lives, and to be fruitful.

Beth Felger, Family Ministry Team Leader (bfelger@greenfordchristian.org)

GREENFORD MOMS GROUP (For moms of Infants through 12th grade)

2nd Wednesday of the month 9a - 10:30a & 6p - 7:30p Bldg C Rm 6

Last Wednesday of the month 9:30a - 11a off campus locations

Our Greenford MOMS GROUP was created so that women can connect with other moms, can grow spiritually, and also be encouraged in their identity as daughters of the King. Join us as we share laughs, tears, joys, and struggles in our daily roles as moms. (*Childcare is available for on-campus meetings.*) Follow our Facebook page (GCC Moms Group) for details, updates/changes, and off-campus locations.

Join us on...

Wednesday, January 10: Zumba with Allison; **Wednesday, February 14:** Galentine's Day Party;

Wednesday, March 14: Baby Shower for *Big Reach Center of Hope*; **Wednesday, April 11:** Expert Panel;

Wednesday, May 9: Painting Class

Join us off campus...

Wednesday, January 24: Stonefruit @ Firestone Farms; **Wednesday, February 28:** Daily Grind

Wednesday, March 28: Lib's Market; **Wednesday, April 25:** TBA

CHILDREN'S MINISTRY

Beth (Family Ministry Team Leader):

bfelger@greenfordchristian.org

Jessica (Volunteering/Parent Resourcing):

jmudger@greenfordchristian.org

Rachelle (Curriculum/Sunday Experience):

rshelhart@greenfordchristian.org

early childhood

SUNDAYS IN FIRST YEARS

All of our classrooms are designed to provide young children with a safe, fun, loving, and energetic atmosphere. In our 2 and 3 year old classes, lessons are designed to help children discover God's love for them through interactive Bible stories and hands-on activities.

youth & family ministry (continued)

preschool 4YRS - KINDERGARTEN

SUNDAYS IN FIRST YEARS Sundays, 9a & 10:30a Bldg C

Your preschooler will be given the opportunity to worship and respond to God during our Sunday morning services. With interactive lessons, upbeat songs, and fun activities...your kid will love it!

elementary 1ST - 4TH GRADE

SUNDAYS IN KID CITY Sundays, 9a & 10:30a Bldg C

We love our 1st-4th graders, that's why we've created a place just for them! Bible lessons are taught in a fun, creative way to engage the hearts and minds of elementary kids, allowing them to discover the character of Christ and the depth of His love for them. From hands-on activities, interactive lesson time, fun games and worship, Sundays in Kid City are the best way to start your child's week!

Sunday Memory Verses —

January: *Luke 4:8*; February: *Proverbs 19:21*

CITY NIGHTS

Wednesdays, 6p - 7:30p Bldg C Rm 8

We'll be meeting up with our friends at Konnect HQ and learning what it means to follow Jesus! Interactive lessons and videos, fun games, and lots of friends! *Join us!*

1/3/18: *Disciples Know Jesus*

1/10/18: *Disciples Follow Jesus*

1/17/18: *Disciples Copy Jesus*

1/24/18: *Disciples Make Disciples*

1/31/18: *Train Your Spirit (Get in Sync with God)*

2/7/18: *Train Your Spirit (Don't Just Try. Train!)*

2/14/17: *Train Your Spirit (Add More God, Subtract More Me!)*

2/21/18: *Train Your Spirit (Eat God's Word Everyday!)*

2/28/18: *Night of Review (Fun games to help us review all we've learned!)*

STUDENT MINISTRY

Billy (Middle School Minister):

bhartwig@greenfordchristian.org

Keith Parker (High School Minister):

kparker@greenfordchristian.org

middle school 5TH - 8TH GRADE

SUNDAYS IN CRASH Sundays, 10:30a Bldg B
(Enter through the East side doors)

We are going through the Bible from start to finish, including activities and games that help students see that the Bible is one big God story from beginning to end. What does Jesus have to do with all of scripture? EVERYTHING! Jesus is the pinnacle of the Gospel Story. *Come join us!*

CRASH WEDNESDAYS

Wednesdays, 6p - 7:30p Bldg B

Throughout the year, students will participate in small groups on Wednesday nights. In these small groups they can walk through life's joys and struggles together, learning how to hear from God and obey His calling in their lives.

MIDDLE SCHOOL STAY CONNECTED —

Parent updates: Text @gccrashp to 81010;

Facebook: Greenford Crash; **Instagram:** greenfordcc_crash

YOUTH & FAMILY MINISTRY *continued...*

youth & family ministry (continued)

high school 9TH - 12TH GRADE

HSM MIDWEEK

Wednesdays, 6p - 7:30p Bldg B

High School students, you're invited to join us for "Midweek!" Come enjoy games, laughter, great discussion, and meaningful conversations as we seek to follow Jesus better! Bring some friends to add to the fun!

UUPCOMING TEACHING SERIES

**Sundays, Pre-service 10a; Service 10:30a -11:30a
Bldg B Rm 1**

We just finished up a series on the "I AM" statements of Jesus, focusing on His divine identity and the access He gives us to the Father. In January and February, we will be working through the book of Acts and seeing just what happens as Jesus changes everything. *We welcome all high school students to join us on Sunday mornings!*

PARENT/STUDENT INFO MEETING

Sunday, January 21 (tentative) Bldg B

Join us after church for a short but highly informational meeting for parents and students. We will be sharing calendars and events through the summer of 2018. We're excited about what God will do in 2018 and can't wait to share it with you.

PARENTS — SIGN UP FOR OUR EMAIL UPDATES

Starting in January, we will be sending update emails to keep you up to speed on all the activities and events of HSM, as well as to provide resources and great articles on parenting and spiritual leadership in the home. Signing up is easy: search for Greenford HSM on Facebook, and then go to the "Email Signup" tab. This will be a great way to keep in touch!

HIGH SCHOOL STAY CONNECTED —

Text Updates:

Students: Text @GCCHSM to 81010;

Parents: Text @HSMPRINTS to 81010

Instagram: follow us at @greenfordcc_hsm

Twitter: find us at @greenfordcc_hsm

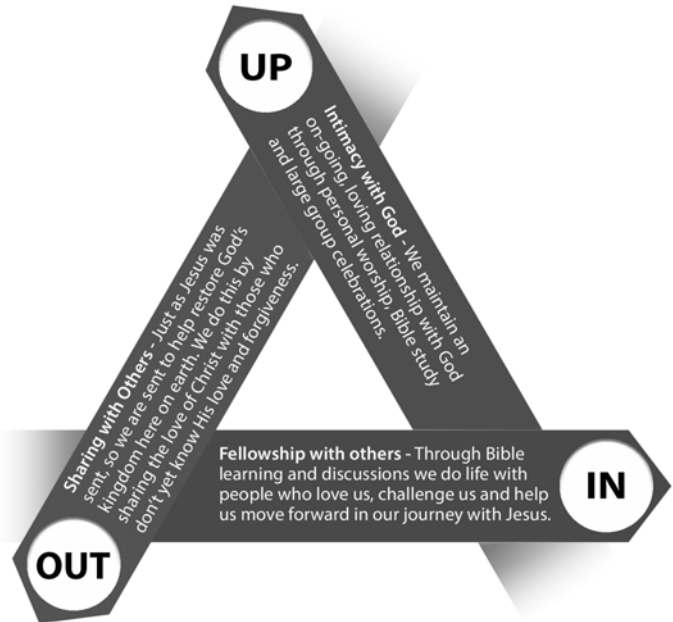
Find us on Facebook: Search Greenford HSM

making disciples

OUR MISSION AT GREENFORD CHRISTIAN CHURCH

...is to help you “make disciples of Jesus, who make disciples of Jesus”. An essential component of this is to help every person maintain three elements in their life: UP, IN and OUT.

Our learning opportunities at Greenford Christian Church have these same three elements built in to groups, classes, and online instruction. With this in mind, each of them is aligned under UP/IN/OUT discipleship tracks. We hope you find this helpful as you grow in your relationship with Jesus here at Greenford Christian Church!



UP — primary

[IN/OUT - SECONDARY]

MEN'S PRAYER GROUP

Thursdays, 5:30p - 6:30p Bldg C Rm 4

Join with other men in prayer for our church and surrounding communities.

Contact Jim: jcouchenour@greenfordchristian.org

MEN'S PRAYER/BIBLE STUDY

Thursdays, 7p - 8:30p Boardman

A weekly gathering of men that learn and pray together. This is open to all men of any age.

Contact Larry: kingstonln@sbcglobal.net

IN — primary

[UP/OUT - SECONDARY]

CHOSEN (Adoption & Foster Families)

This group is for those who are called to care for orphans through adoption/fostering awareness, by supporting children in orphan-ages, and by serving as a resource for families in all stages of the adoption/fostering process.

Contact Mark/Lisa: lheddleson@sbcglobal.net

HUDDLES Location/Times vary

Huddles are small group gatherings that lead you through a directed, spiritual growth process. They have become one of the most effective ways to make disciples at Greenford.

Contact Jim: jcouchenour@greenfordchristian.org

SMART STEP-FAMILY BLENDED & BLESSED (Support Group)

Next session begins Wednesday, January 10

Wednesdays, 6p Bldg C Rm 2

Discover the key steps to building a healthy stepfamily with DVD sessions with Ron Deal, a licensed Christian counselor and an expert on Blended Families. This group will have discussions after each video session, led by a couple who has successfully navigated being a “blended family”.

Contact Ron: rdicken@greenfordchristian.org

making disciples (continued)

DIVORCECARE (*Support Group*) <http://www.divorcecare.org>

Next session begins Tuesday, January 16

Tuesdays, 7p Bldg C Rm 5

Weekly support group (13 weeks) and seminars conducted by people who understand what you are experiencing. You'll learn how to deal with the pain of the past and look forward to rebuilding your future. Each session includes a video seminar featuring experts on divorce followed by small group discussion. Registration: \$15.

Contact Ron: rdicken@greenfordchristian.org

LADIES' BIBLE STUDY

Thursdays, 9:30a - 11a Bldg D (*First Step room*)

Join this wonderful group of ladies who meet every Thursday to study the bible and pray. A wide variety of topics are discussed that pertain to everyday living and spiritual growth.

Contact Jim: jcouchenour@greenfordchristian.org

OUT — primary

[UP/IN - SECONDARY]

GOSPEL-CENTERED COMMUNITIES

Gospel-Centered Communities (gcc's) are gatherings of people who get together during the week to explore God and faith, connect in community, and actively serve our communities. They aren't separated by age or affinity because we recognize that everyone can learn from people from all walks of life.

Contact Jim: jcouchenour@greenfordchristian.org

"I AM" LADIES' GOSPEL-CENTERED COMMUNITY

1st & 3rd Friday 9a - 11a Bldg. E (*Center of Hope*)

Join us anytime! Our group focus is to learn about God and encourage a deeper personal relationship with Him by prioritizing time in the Bible with other women. Build knowledge and faith of who you are in Jesus Christ, by answering "Who am I"? We can't wait to meet you!

Contact Dana: dagough@greenfordchristian.org

GREENFORD MOMS GROUP (For moms of Infants through 12th grade)

2nd Wednesday of the month

9a - 10:30a & 6p - 7:30p Bldg C Rm 6

Last Wednesday of the month

9:30a - 11a off campus locations

Our Greenford MOMS GROUP was created so that women can connect with other moms, can grow spiritually, and also be encouraged in their identity as daughters of the King. Join us as we share laughs, tears, joys, and struggles in our daily roles as moms. (*Childcare is available for on-campus meetings.*) Follow our Facebook page (GCC Moms Group) for details, updates/changes, and off-campus locations.

Join us on...

Wednesday, January 10: Zumba with Allison

Wednesday, February 14: Galentine's Day Party

Wednesday, March 14: Baby Shower for Big Reach

Center of Hope

Wednesday, April 11: Expert Panel

Wednesday, May 9: Painting Class

Join us off campus...

Wednesday, January 24: Stonefruit @ Firestone Farms

Wednesday, February 28: Daily Grind

Wednesday, March 28: Lib's Market

Wednesday, April 25: TBA

Contact Jessica: jmudger@greenfordchristian.org

CRACKED POTS

This group of ladies meets regularly to visit garden centers, make floral arrangements or other crafts, and to meet for dinner...but most importantly to be together to have fun! For a schedule of upcoming events, contact Beth.

Contact Beth: beth.wiley@att.net

LIT 'N LATTE 7p on the 4th Tuesday of the month

(Meets at various member's home)

We are a group of women who love a good read and the fellowship of other women. For more information on the title of the month's book, meeting place and date, contact Marilyn.

Contact Marilyn: mplmplmpl@aol.com

(UP/IN/OUT continued)

making disciples (continued)

HOLY YOGA WOMEN'S RETREAT

Friday, March 23 (6p) to Sunday, March 25 (2p)

Spend a weekend at the beautiful Elkhorn Valley Retreat Center in Bergholz, Ohio. We will have Holy Yoga, an inspiring speaker, lovely take-home projects, relaxing quiet time, challenging rock climbing, delicious food, and optional yoga workshops.

Contact Bethanie: bethaniec@holyyoga.net

MISSION TRIPS (See page 16)

resources

GREENFORD CHRISTIAN CHURCH LIBRARY

Located in the northeast corner of Bldg. D

Open Sundays 8:30a-9a; 10a-10:30a; 11:30 - 12p

Have you had a chance to check out our Greenford Christian Church library? We offer a collection of inspirational, faith-based fiction and nonfiction books, magazines, and audio/video materials for all ages. *We encourage you to stop by on a Sunday morning and visit us!*

A review on "**A WOMAN OVERWHELMED**":

*When someone asks, "Are you feeling overwhelmed?", the answer is a resounding "Yes!" Isn't that just life? No. Hayley DiMarco in **A Woman Overwhelmed** takes you from being overwhelmed with life to being overwhelmed by God's love. Hayley writes "If you are tired of being overwhelmed by life, then choose to make the mission of God our number one focus." As simple as that. Take my focus off the world and focus on God! I highly encourage every woman out there to read this book even with a busy schedule, five minutes a day will make all the difference.*

Contact Connie (church librarian): greenfordlibrary@gmail.com

serve on campus

FIRST IMPRESSIONS

We want to make our first impression a positive one for people who come through our doors here at Greenford. There are several areas where you are needed in this ministry:

Greeter — Greeting people as they come through the doors, or handing out programs as they enter the auditorium with a warm smile, a simple hello, and a helpful spirit will make a memorable *first impression*.

Ushers — Helping people find a place to sit is becoming more of a need. At the start of the 9am and 10:30am services, when the lights go down and people stand to sing, it can be difficult finding a seat. That's where Seating Ushers come into play!

Information Counter — Providing assistance to those seeking information on a variety of topics (ie: events, ministries, room locations, etc.).

First Step Room — Creating a welcoming environment for visitors who have come to worship at Greenford. This is your opportunity to help guests feel welcome by learning their name(s), extending a hand, helping them find their way around the campus, and giving a gift.

Communion Preparation — Serving on a rotating schedule to prepare communion trays for worship and the communion kits for our shut-ins.

Servers — A team of men working together on Sunday mornings to serve communion and take up the offering.

Contact Corey: ckelly@greenfordchristian.org

FRIDAY GUYS

Mondays, Wednesdays, Fridays

8a - 12p (*Schedule varies*)

This team consists of people willing to do light maintenance on our campus (ie: painting, repair work, light construction, electrical, landscaping). The service opportunities and different projects that need completed around our campus are limitless, and we would love your help!

Contact Bruce: brhodes@greenfordchristian.org

HEARING IMPAIRED

We are looking for individuals with a knowledge of sign language, to volunteer as an interpreter during our 7:30am Sunday worship service.

Contact Nancy: handsrbb@yahoo.com

SHEPHERDING / PASTORAL CARE

If you have a heart for God and a heart for people, we have various opportunities in which you can be involved:

Care Team — This team ministers to people from Greenford who are in the hospital, homebound, or in a nursing home facility. If you have a heart for God, a heart for people, and a heart of compassion, we would love to have you on the team.

Volunteer Driver — We have people who may need a ride to a doctor appointment, or the hospital for tests/treatments. If you have the time and ability to provide transportation, we would love to be able to call you when there is a need.

Contact John: jbush@greenfordchristian.org

SAFETY TEAM

This team aids in making the children's areas safe and keeping a watchful eye for anything that could prevent our church attenders from having a safe, enjoyable worship experience. Safety team members will walk around our campus on Sunday mornings, Wednesday evenings, and during special events. While walking they will be observant of unsafe or out of the ordinary situations and then resolve the situation or report it to the proper ministry staff person. Volunteers will serve Sundays during either the 9am service or the 10:30am service for one month at a time, and/or on Wednesday evenings at 5:45pm.

Contact Bruce: brhodes@greenfordchristian.org

SNOW SHOVELING

If you would like to help push or shovel snow on our campus sidewalks this winter, we could use your help!

Contact Bruce: brhodes@greenfordchristian.org

WORSHIP & ARTS

There are many opportunities available to serve on Sunday mornings as part of our worship team:

Vocalist — An auditioned group of singers who sing on one of Greenford's praise teams.

Instrumentalist — An auditioned group of instrumentalists (ie: drummers, guitarists, pianists, etc.) who play on one of Greenford's praise teams.

Drama Team — A group of actors/actresses who contribute to our worship experiences.

Orchestra — A group of strings, woodwind, brass, and percussion players who contribute to our worship experiences.

serve on campus (continued)

WORSHIP & ARTS (continued)

Adult Choir — A group of vocalists who contribute to our worship experience throughout the year.

Bell Choir — A group of people who gather to ring bells, pray, and fellowship with one another.

Stage Manager — An individual with an attention to detail who can serve behind the scenes for the 9am and 10:30am services once a month.

Stage Hand — An individual willing to serve behind the scenes moving things on and off stage during the 9am and 10:30am services once a month.

Stage Design/Construction — A team of people who meet once a month to develop stage designs around our sermon series theme, and carry those ideas through to completion.

Contact Jim: jcouchenour@greenfordchristian.org

EARLY CHILDHOOD (Infant - 3yrs.)

We would love for you to play a part in loving on, caring for, and teaching our little ones.

Classroom Assistant — We are looking for people who can assist our 2-3 year old teachers with crafts, games, and classroom management. We would love for you to be part of our team on Sunday mornings!

Nursery Worker — Come serve our parents by caring for their littlest ones on Sunday mornings. If you love babies, then this is the place for you!

Service Coordinator — If you would like to volunteer in family ministry but prefer not to be in a classroom, then this would be a great place for you! Help make sure that classrooms are staffed properly and be on hand to assist workers if the needs arise.

Greeter/Check-In Volunteer — Looking for outgoing, friendly people to greet kids and their families as they arrive on Sunday mornings, and also help them register for their classes. Volunteer must have computer skills.

Contact Jessica: jmudger@greenfordchristian.org

PRESCHOOL (4yrs. - Kindergarten)

Worship Leader — We are looking for a high energy person who's not afraid to have fun with preschoolers. You do NOT need to be able to sing well, but you must LOVE to have fun!

PRESCHOOL (continued)

Classroom Assistant — We are looking for people who can assist teachers with classroom duties, help with crafts, games, handing out snacks, crowd control, etc. If you love preschoolers, we would love to have you join our team! Several positions are available. Schedule: 9am and 10:30am (on month/off month).

Greeter/Check-In Volunteer — Looking for outgoing, friendly people to greet kids and their families as they first come in on Sunday mornings, and help them to register for their classes. Volunteer must have computer skills.

Childcare Volunteer — We are looking for volunteers to help with childcare while mom's attend our Greenford Moms Group on the 2nd Wednesday of the month.

Contact Jessica: jmudger@greenfordchristian.org

ELEMENTARY (1st - 4th Grade)

In Kid City we have a dedicated group of volunteers who love our kids, but we are in need of more. If you are looking for a place where God can use you to love on His kids, this is the place for you. Listed below are several volunteer opportunities during our 9am & 10:30am services on Sundays or City Nights Wednesday evenings. Want to help but cannot commit to a full year? Volunteer schedules can be flexible (monthly, bi-weekly, etc.).

Small Group Leaders — We need dependable individuals to lead games or activities in a small group setting to help reinforce the Bible lesson. All materials and supplies are provided, all that's required is a heart for kids and a desire to want to help them learn all about Jesus!

Assistants — We need people to assist the Small Group Leaders in helping with crafts, games, etc. All you need to do is come prepared to love on kids and have fun!

Storytellers — We need people with lots of personality who aren't afraid to be in front of a group of elementary kids. A script is provided for you to follow. All you need to do is read it ahead of time and come prepared to put on a good presentation!

Contact Jessica: jmudger@greenfordchristian.org

serve on campus (continued)

MIDDLE SCHOOL (5th - 8th Grade)

CRASH is a great place to serve if you enjoy working with middle school students. Listed below are several volunteer opportunities:

Student Ministry Greeters & Guides — We need friendly people to welcome our students and their families to the middle school program on Sunday mornings. Be the first smiling face that newcomers meet, and help answer their questions about what happens in Bldg. B! Commitment is from 10:15am-11:45am on as many Sundays as you would like to be scheduled.

Props & Set Designer — If you're creative, resourceful, handy, and like to work behind the scenes, we need you to design and construct stage sets and props for our Crash (5th-8th grade) ministry. Sets change every 3-6 weeks and can be as simple or elaborate as you can imagine!

Worship Leader — If you have a heart for leading kids in worship, this may be the role for you! No instrument experience necessary, as we use video technology instead of a live band—but you have to be able to carry a tune, lead minor choreography, and enjoy 5th-8th graders! Commitment is from 10:15am -11:45am on Sunday mornings.

Teachers & Assistants — We'll supply you with the curriculum and supplies—all you need to do is prep and deliver! If you have a gift for teaching or helping and can communicate well with middle school students, we can use you on Sunday mornings from 10:15am -11:45am in our 5/6 grade or 7/8 grade classrooms.

Contact Billy: bhartwig@greenfordchristian.org

HIGH SCHOOL (9th - 12th Grade)

If you enjoy working with high school students and want to help them become the next generation of leaders in our church, then we need you! We currently have openings during our 10:30am Sunday morning programming.

Contact Keith: kparker@greenfordchristian.org

serve in the community

BIG REACH CENTER OF HOPE

The Big Reach Center of Hope is dedicated to helping individuals and families in crisis experience life-changing HOPE. We do this by providing prayer, relationships, food and clothing, education, and community connections to those in need. We serve the Mahoning Valley and surrounding communities in Northeast Ohio. Please visit: www.bigreachministries.org

follow us on our **NEW facebook** page: @BRCOH

OFFICE HOURS

Monday - Thursday 9am - 2pm 330-533-3278
(Office volunteers are needed during the hours above.)

DONATION DROP-OFF:

Monday & Wednesday 9am - 2pm; Thursday 9am - 6pm
Sunday 8am - 12pm

FOOD/CLOTHING DISTRIBUTION HOURS

Tuesdays 9am - 12pm; Thursdays 4pm - 7pm;

FIRST-TIME VISITORS:

The first time you visit Big Reach for Food/Clothing Distribution, you will need to provide the following:

1. PHOTO ID
2. PROOF OF INCOME
3. PROOF OF RESIDENCY
4. PROOF OF BIRTH/PROOF OF CUSTODY

VOLUNTEER OPPORTUNITIES

URGENT NEED! Mon., Wed., Thurs., 9am - 2pm
For Volunteer Help in our DONATION ROOM,
sorting donations

Giving/Clothing Room — We need help replenishing our giving room following each distribution. The clothing room always needs caring hands to sort, organize, and hang donated clothing.

Office — Volunteers needed for a variety of light office tasks including registration, data entry, copying, and filing.

Life Spot Prayer Partner — Building relationships and offering hope through conversation, sharing personal testimony, and prayer with individuals and families in the Life Spot coffee shop.

VOLUNTEER OPPORTUNITIES (*continued*)

Computer Operator — Must be friendly and courteous. You are our first impression! Must have basic knowledge of computers.

Food Pantry Volunteer — Must be friendly and courteous. Guide families through the food pantry as they choose their groceries.

Drivers (Food Rescue) — Visit local businesses to pick up food donations. Ohio Drivers License with clean driving record required.

Monday & Wednesday Volunteers — Cleaning, stocking, organizing and helping prepare for distribution days.

Street Team — Do you have a passion for “street evangelism”? Individuals will go out into our surrounding communities to share the Good News of the Gospel, while informing them of the work God is doing through the Big Reach ministry at Greenford.

Please call Val (330-533-3278 x503) with volunteer questions.

SUPER SERVE SATURDAYS at The Big Reach Center of Hope Saturday, January 6 & February 3 9a - 12p Bldg E

Come out for an hour or the entire morning...it's up to you! An easy way to take a tour, get involved, make new friends, and enjoy fellowship with others. We will be cleaning, scrubbing, sorting, stocking, and more! Come alone or bring your family and friends.

serve in the world

MISSIONS

With Jesus' Great Commission as our guide, we seek to maintain the goal found in Matthew 28: "Go and make disciples of all nations, baptizing them in the name of the Father, and the Son and the Holy Spirit, teaching them to obey everything I have commanded you. And surely I am with you always, to the very end of the age." Due to this commission, we put a priority on what we give to mission organizations outside of our local church. Currently, the top 25% of our total offering each week goes to our supported missions both domestic and abroad.

Visit our website to learn more about the following mission trip and/or complete an application. Just click on "Mission Trips" on our homepage. Contact Bruce at brhodes@greenfordchristian.org.

UPCOMING MISSION TRIP 2018

Mission Trip to Honduras with Disciple Makers July 7 - July 14

Impact '18 is a trip with Disciple Makers to their newest mission work in Las Brisas, Honduras, (along the Chamelecon River on the northern coast of Honduras). The hope is to have 50-75 people on the team from different partnering churches of Disciple Makers. The goal is to make an impact for Christ by working alongside the local church, by working with the existing medical clinic, working with the public school in the community, by holding VBS programs with various pockets of people along the river, and through assisting with construction needs at the church.

Apply at www.disciplemakers.org (go to "applications" tab, the go to "Impact '18" tab and complete registration form.)

calendar

SUNDAYS

Worship — 7:30am, 9am & 10:30am Bldg. D
First Years — Infant - Kindergarten
 9am & 10:30am Bldg. C
Kid City — 1st - 4th grade
 9am & 10:30am Bldg. C

Crash — 5th - 8th grade 10:30am Bldg. B
HSM — 9th - 12th grade 10am Bldg. B
Young Adults — 18 yrs - 26 yrs 9am Bldg. E
Adults — 9am Bldg. E

JANUARY 2018

1/9 Center of Hope Food Distribution 9am Bldg. E
1/10 Moms Group 9am Bldg. C
 City Nights 6pm Bldg. C
 CRASH 6pm Bldg. B
 HSM 6pm Bldg. B
 Moms Group 6pm Bldg. C
 Smart Step-Family 6pm Bldg. C
1/11 Center of Hope Food Distribution 4pm Bldg. E
 Ladies' Bible Study 9:30am Bldg. D
 Men's Prayer Group 5:30pm Bldg. C
 Men's Prayer/Bible Study 7pm off campus
1/16 Center of Hope Food Distribution 9am Bldg. E
 DivorceCare 7pm Bldg. C
1/17 City Nights 6pm Bldg. C
 CRASH 6pm Bldg. B
 HSM 6pm Bldg. B
 Smart Step-Family 6pm Bldg. C
1/18 Center of Hope Food Distribution 4pm Bldg. E
 Ladies' Bible Study 9:30am Bldg. D
 Men's Prayer Group 5:30pm Bldg. C
 Men's Prayer/Bible Study 7pm off campus
1/19 Ladies' Bible Study 9am Bldg. E
1/23 Center of Hope Food Distribution 9am Bldg. E
 DivorceCare 7pm Bldg. C
 Lit 'n Latte 7pm off campus
1/24 City Nights 6pm Bldg. C
 CRASH 6pm Bldg. B
 HSM 6pm Bldg. B
 Smart Step-Family 6pm Bldg. C
1/25 Center of Hope Food Distribution 4pm Bldg. E
 Ladies' Bible Study 9:30am Bldg. D
 Men's Prayer Group 5:30pm Bldg. C
 Men's Prayer/Bible Study 7pm off campus
1/30 Center of Hope Food Distribution 9am Bldg. E
 DivorceCare 7pm Bldg. C
1/31 Moms Group 9:30a off campus
 City Nights 6pm Bldg. C
 CRASH 6pm Bldg. B
 HSM 6pm Bldg. B
 Smart Step-Family 6pm Bldg. C

FEBRUARY 2018

2/1 Center of Hope Food Distribution 4pm Bldg. E
 Ladies' Bible Study 9:30am Bldg. D
 Men's Prayer Group 5:30pm Bldg. C
 Men's Prayer/Bible Study 7pm off campus
2/2 Ladies' Bible Study 9am Bldg. E
2/3 Super Serve Saturday 9am Bldg. E
2/6 Center of Hope Food Distribution 9am Bldg. E
 DivorceCare 7pm Bldg. C
2/7 City Nights 6pm Bldg. C
 CRASH 6pm Bldg. B
 HSM 6pm Bldg. B
 Smart Step-Family 6pm Bldg. C
2/8 Center of Hope Food Distribution 4pm Bldg. E
 Ladies' Bible Study 9:30am Bldg. D
 Men's Prayer Group 5:30pm Bldg. C
 Men's Prayer/Bible Study 7pm off campus
2/13 Center of Hope Food Distribution 9am Bldg. E
 DivorceCare 7pm Bldg. C
2/14 Moms Group 9am Bldg. C
 City Nights 6pm Bldg. C
 CRASH 6pm Bldg. B
 HSM 6pm Bldg. B
 Moms Group 6pm Bldg. C
 Smart Step-Family 6pm Bldg. C
2/15 Center of Hope Food Distribution 4pm Bldg. E
 Ladies' Bible Study 9:30am Bldg. D
 Men's Prayer Group 5:30pm Bldg. C
 Men's Prayer/Bible Study 7pm off campus
2/16 Ladies' Bible Study 9am Bldg. E
2/20 Center of Hope Food Distribution 9am Bldg. E
 DivorceCare 7pm Bldg. C
 Lit 'n Latte 7pm off campus
2/21 City Nights 6pm Bldg. C
 CRASH 6pm Bldg. B
 HSM 6pm Bldg. B
 Smart Step-Family 6pm Bldg. C
2/22 Center of Hope Food Distribution 4pm Bldg. E
 Ladies' Bible Study 9:30am Bldg. D
 Men's Prayer Group 5:30pm Bldg. C
 Men's Prayer/Bible Study 7pm off campus
2/27 Center of Hope Food Distribution 9am Bldg. E
 DivorceCare 7pm Bldg. C
 Lit 'n Latte 7pm off campus
2/28 Moms Group 9:30a off campus
 City Nights 6pm Bldg. C
 CRASH 6pm Bldg. B
 HSM 6pm Bldg. B
 Smart Step-Family 6pm Bldg. C